

I, Louise V. Isaacs, Clerk of the Circuit Court of Martin County, Florida, hereby certify that this plat was filed for record in Plat Book 2, Page 21, Martin County, Florida, public records, this day of \_\_\_\_\_, 1980.

LOUISE V. ISAACS, CLERK  
CIRCUIT COURT  
MARTIN COUNTY, FLORIDA

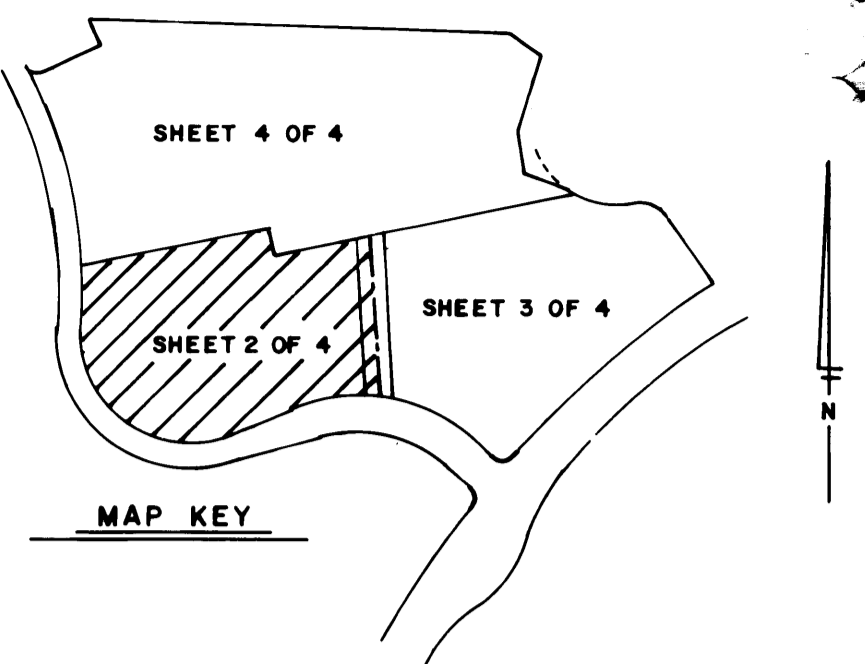
BY: \_\_\_\_\_  
Deputy Clerk

File No. \_\_\_\_\_

# MARINER SANDS COUNTRY CLUB

## A REPLAT OF A PORTION OF MARINER SANDS PLAT NO. 1

Being all of TRACT MF-2 AND all of TRACT RC-1 AND all of TRACT R/GA-1 of MARINER SANDS PLAT NO.1 as recorded in Plat Book 6, Page 47, public records of Martin County, Florida.



SHEET 2 OF 4 SHEETS  
HUTCHEON ENGINEERS INCORPORATED  
Civil Engineers and Land Surveyors  
Belle Glade Palm City West Palm Beach  
February 1980

### MORTGAGE HOLDER'S CONSENT

MARINER SANDS DEVELOPMENT CORP., a Georgia corporation, hereby certifies that it is the holder of a certain mortgage, lien or encumbrance on the land described hereon and does consent to the dedication hereon and does subordinate its mortgage, lien or encumbrance to such dedication.

SIGNED AND SEALED this 13th day of MARCH, 1980, on behalf of said corporation by its President and attested to by its Assistant Secretary.

MARINER SANDS DEVELOPMENT CORP.

ATTEST: Timothy C. Hackett  
Timothy C. Hackett, Assistant Secretary

BY: Erling D. Speer  
Erling D. Speer, President

### ACKNOWLEDGEMENT

STATE OF FLORIDA  
COUNTY OF MARTIN

Before me, the undersigned notary public, personally appeared Erling D. Speer and Timothy C. Hackett, to me well known to be the President and Assistant Secretary, respectively, of MARINER SANDS DEVELOPMENT CORP., a Georgia corporation, and they acknowledge that they executed such instrument as such officers of said corporation.

WITNESS my hand and official seal this 13th day of MARCH, 1980.

Notary Public  
State of Florida at large Kathie E. Cranner  
My commission expires: 10/2/83

### MORTGAGE HOLDER'S CONSENT

GREAT AMERICAN MANAGEMENT AND INVESTMENT, INC., a Delaware corporation, hereby certifies that it is the holder of a certain mortgage, lien or encumbrance on the land described hereon and does subordinate its mortgage, lien or encumbrance to such dedication.

SIGNED AND SEALED this 12th day of MARCH, 1980, on behalf of said corporation by its Vice President and attested to by its Assistant Secretary.

GREAT AMERICAN MANAGEMENT AND INVESTMENT, INC.

ATTEST: Donna Browning  
Donna Browning, Assistant Secretary

BY: Jack Prather  
Jack Prather, Vice President

### ACKNOWLEDGEMENT

STATE OF GEORGIA  
COUNTY OF JULY

Before me, the undersigned notary public, personally appeared Jack Prather and Donna Browning, to me well known to be the Vice President and Assistant Secretary, respectively, of GREAT AMERICAN MANAGEMENT AND INVESTMENT, INC., a Delaware corporation, and they acknowledge that they executed such instrument as such officers of said corporation.

WITNESS my hand and official seal this 12th day of MARCH, 1980.

Notary Public  
State of Georgia at large Sylvia A. Seymour  
My commission expires: July 5, 1982

### MORTGAGE HOLDER'S CONSENT

FIRST AMERICAN BANK OF PALM BEACH COUNTY, a Florida banking corporation, hereby certifies that it is the holder of a certain mortgage, lien or encumbrance on the land described hereon and does subordinate its mortgage, lien or encumbrance to such dedication.

SIGNED AND SEALED this 13th day of MARCH, 1980, on behalf of said corporation by its Senior Vice President and attested to by its Assistant Vice President.

FIRST AMERICAN BANK OF PALM BEACH COUNTY

ATTEST: Carol Deal  
Carol Deal, Assistant Vice President

BY: James J. McGarry  
James J. McGarry, Senior Vice President

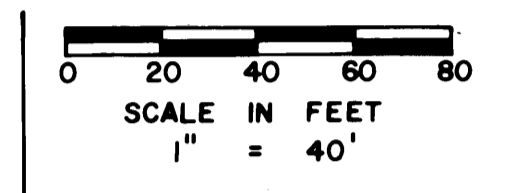
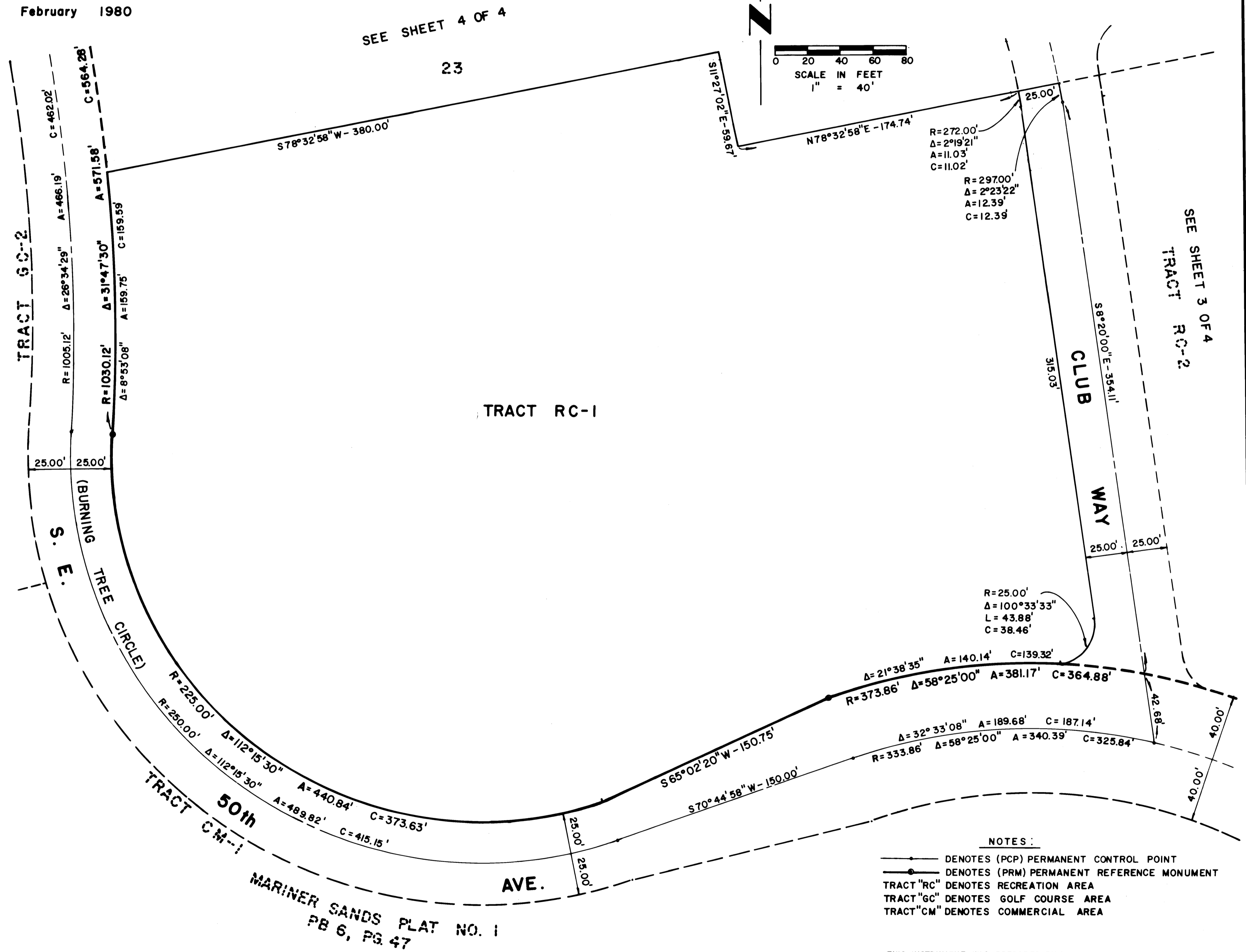
### ACKNOWLEDGEMENT

STATE OF FLORIDA  
COUNTY OF Palm Beach

Before me, the undersigned notary public, personally appeared James J. McGarry and Carol Deal to me well known to be the Senior Vice President and Assistant Vice President, respectively, of FIRST AMERICAN BANK OF PALM BEACH COUNTY, a Florida banking corporation, and they acknowledge that they executed such instrument as such officers of said banking corporation.

WITNESS my hand and official seal this 13th day of MARCH, 1980.

Notary Public  
State of Florida at large Theresa M. Lopez  
My commission expires: 3-4-83



NOTES:

- DENOTES (PCP) PERMANENT CONTROL POINT
- DENOTES (PRM) PERMANENT REFERENCE MONUMENT
- TRACT "RC" DENOTES RECREATION AREA
- TRACT "GC" DENOTES GOLF COURSE AREA
- TRACT "CM" DENOTES COMMERCIAL AREA

THIS INSTRUMENT WAS PREPARED BY:  
GEORGE C. YOUNG, JR.  
HUTCHEON ENGINEERS INCORPORATED  
1505 S.W. MARTIN HWY.  
PALM CITY, FLORIDA